



MONTHLY MEMBERSHIP PROGRESS REPORT

District 323D2

Results as of: 5/31/2017

GMT: KAMLESH JAIN

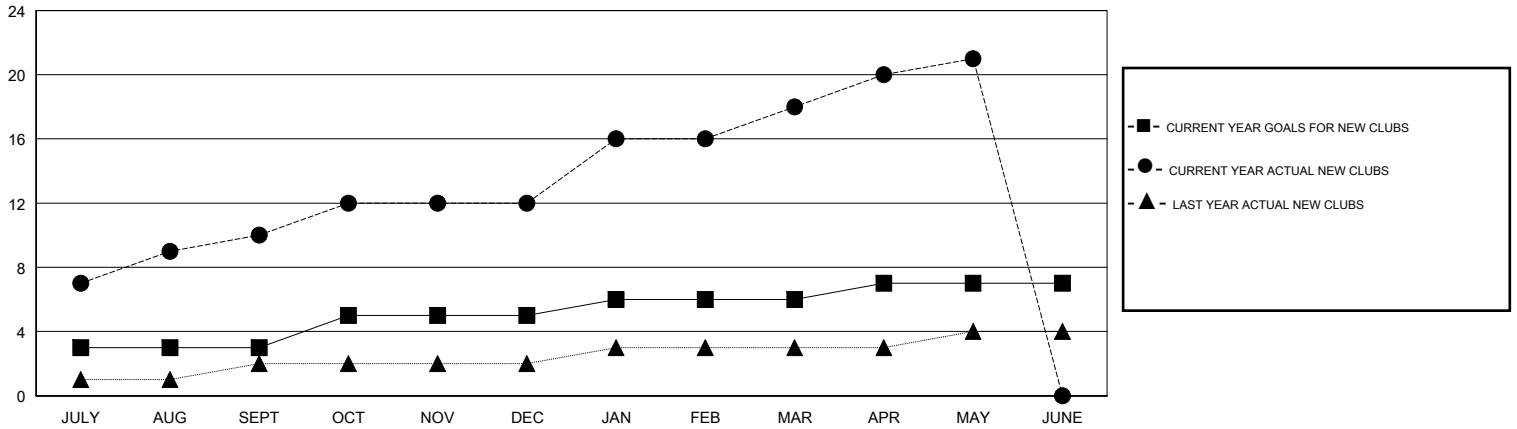
LOCATION INDIA

GMT CA

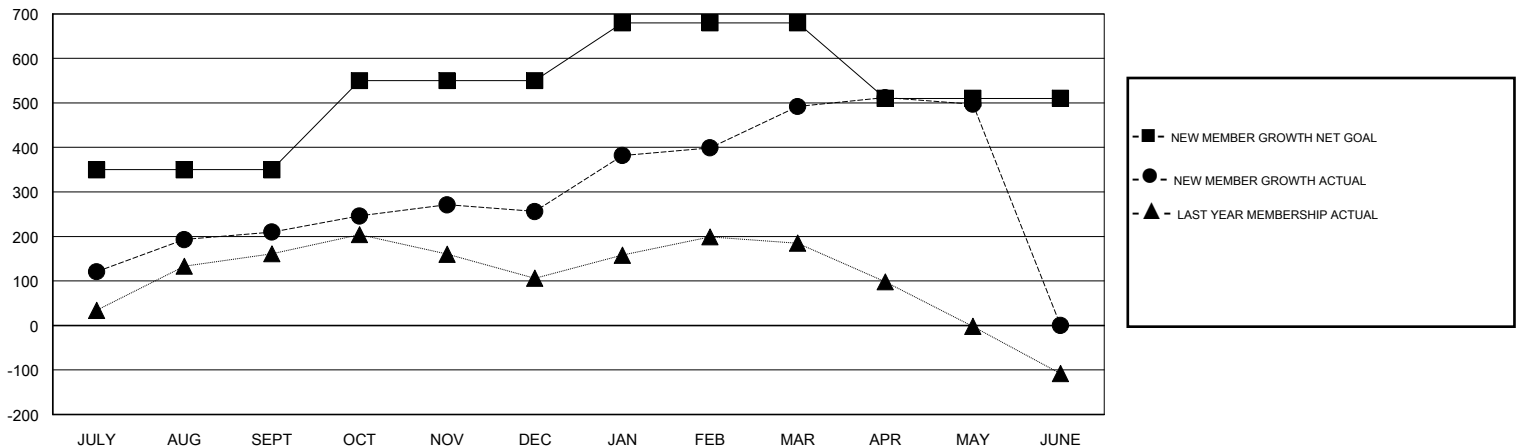
Clubs			
RESULTS FOR 2016-2017			
QUARTER	NEW CLUB GOAL	NEW CLUBS	DROPPED CLUBS
JULY/AUG/SEPT	3	10	1
OCT/NOV/DEC	2	2	1
JAN/FEB/MAR	1	6	1
APR/MAY/JUNE	1	3	0

Members			
RESULTS FOR 2016-2017			
QUARTER	NEW MEMBER GROWTH NET GOAL (not reinstated or transfers)	NEW MEMBER GROWTH ACTUAL (not reinstated or transfers)	DROPPED MEMBERS ACTUAL (including transfers)
JULY/AUG/SEPT	350	403	193
OCT/NOV/DEC	200	183	137
JAN/FEB/MAR	130	341	105
APR/MAY/JUNE	-170	142	137

GOALS AND ACTUAL NEW CLUBS CUMULATIVE



GOALS AND ACTUAL MEMBERS CUMULATIVE



DROPPED CLUBS: 3	96 CLUBS OF 133 ADDED 1 OR MORE NEW MEMBERS	<u>GENDER DISTRIBUTION</u>	
DROPPED MEMBERS		MALE	3,091 (61.54%)
DECEASED	CLICK HERE FOR CUMULATIVE MEMBERSHIP DATA	FEMALE	1,932 (38.46%)
CLUB CANCELLED		TOTAL FAMILY UNIT MEMBERS	3,193
OTHER		FAMILY MEMBERS PAYING HALF DUES	1,670
TOTAL			